



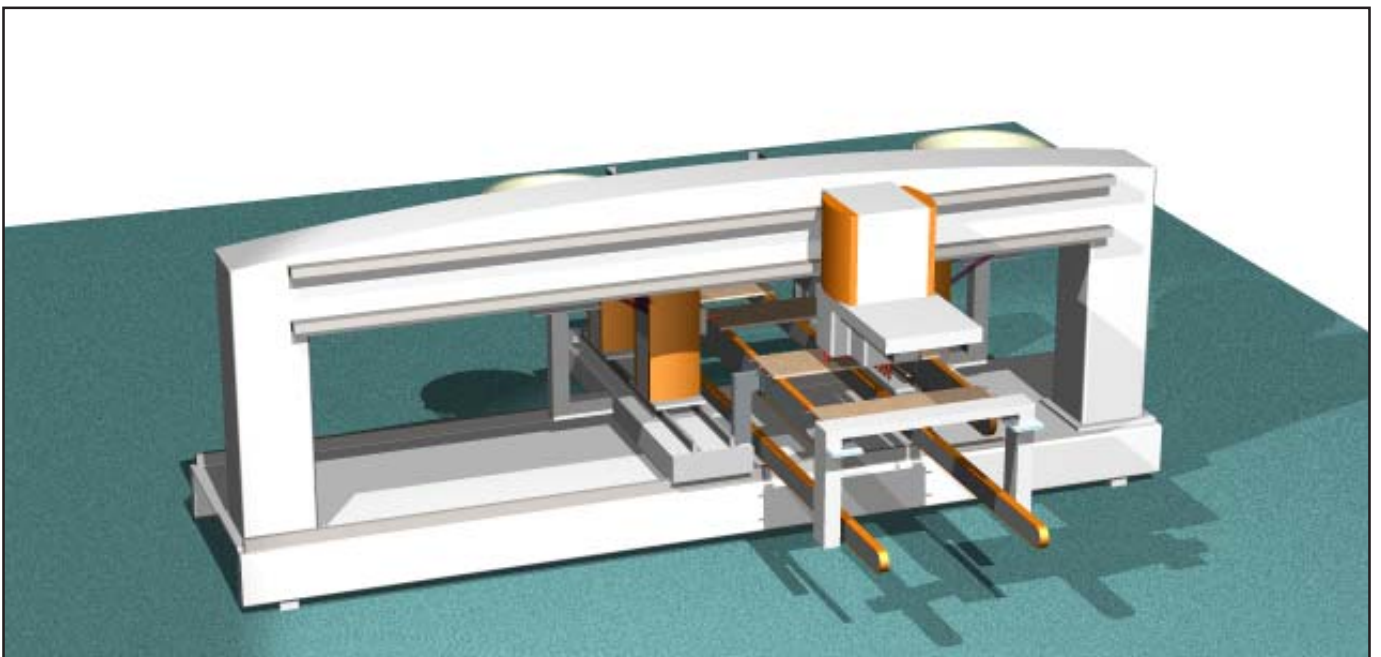
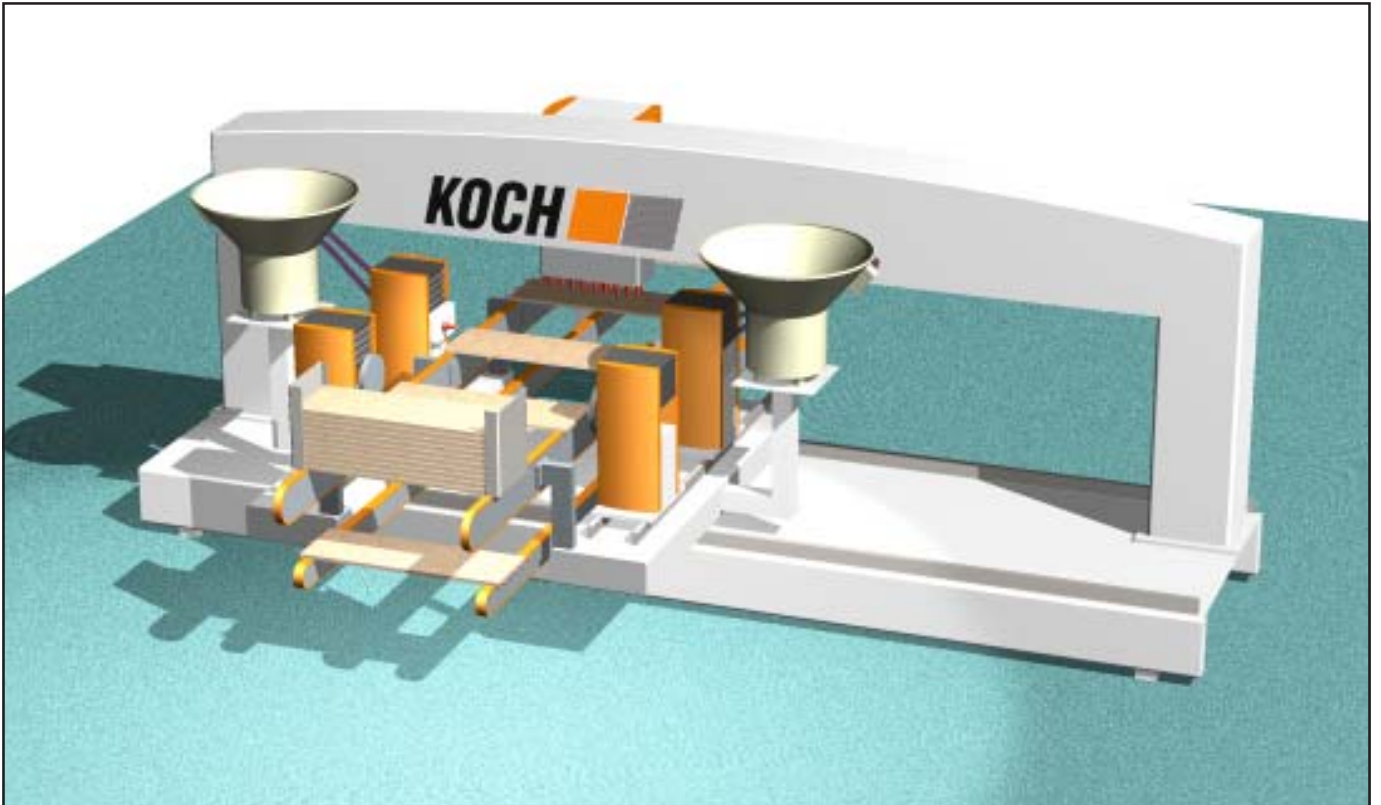
Zertifizierung nach  
DIN EN ISO 9001  
Deutscher Akkreditierungsrat

**Gerhard Koch  
Maschinenfabrik  
GmbH & Co. KG**  
Industriestrasse 18-22  
Industriegebiet Greste  
D-33818 Leopoldshöhe  
Telefon (05202) 990-0  
Telefax (05202) 990-101  
<http://www.kochma.de>  
Email: [info@kochma.de](mailto:info@kochma.de)



## SBD-PTP

- Double sided automatic throughfeed machine with PTP-processing for sawing, boring and dowel driving



# KOCH Model SBD-PTP Sawing - Boring - Dowel Driving

## Double sided automatic throughfeed machine with PTP-processing

### Machine Concept

This modern machine concept is the answer to the demands of today's market and future production requirements. The SBD-PTP combines perfectly the efficiency of the fast machines for high batch production with the flexibility of the CNC-processing.

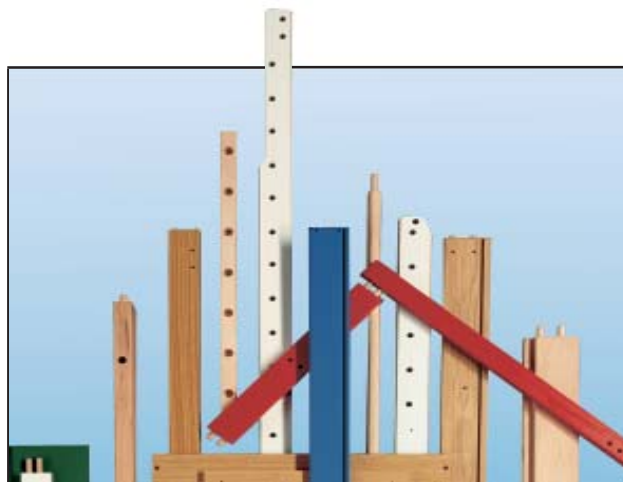
- double sided complete processing in throughfeed: sawing - boring - glueing - vertical dowel driving - edge boring
- minimal set-up times: quick reaction to customers' demands and by this always being competitive
- no fixed boring and dowel patterns: to construct as to the demands of customers and not to the machinery programme

### Universal Range of Application

- drawers
- cabinet door and furniture components, profiled rails
- upholstered sofas and recliners, frame components, chairs
- front doors

### Stock Dimensions

Length:	120 - 2500 mm	4-3/4" - 98"
Width:	30 - 320 mm	1-3/16" - 12-1/2"
Thickness:	12 - 50 mm	1/2" - 2"



### Machine Sequence

- KOCH Numeric with Pentium CPU calculator  
Windows NT system  
Touch Screen for all function inputs
- Telephone modem for remote trouble shooting
- NC-controlled movement of adjustable machine side
- Hopper feed with stock separation of work pieces
- Trim-saw station with hogger and horizontal stroke  
Rotation continuously adjustable 3000-6000 rpm
- Horizontal boring - glueing - dowel driving station  
NC positioning in throughfeed (Y) and in height (Z)  
1 boring spindle 7200 rpm  
1 glue valve + 1 dowel driving tool  
Electronic glue control ELC (patented)
- Vertical boring station  
1 overhead beam with hardened linear guides  
1 vertical support with NC positioning in X-Y-Z  
17 individually controlled vertical boring spindles  
(10 spindles in X, 7 spindles in Y)  
1 horizontal boring spindle for edge borings  
Rotation of drilling 9000 rpm
- Central lubrication for all NC-axes
- Stock return conveyor (1-man-operation)
- Protection fence and CE-package

